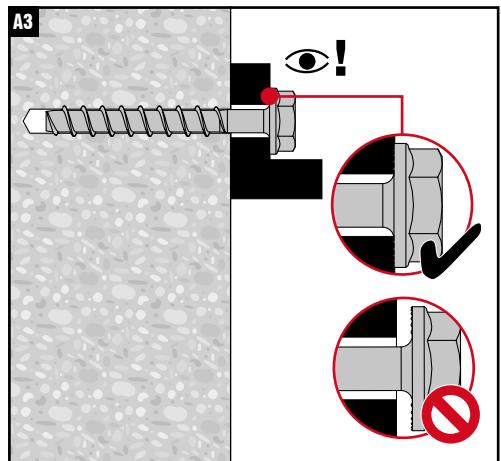
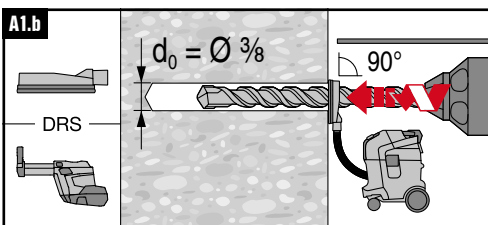
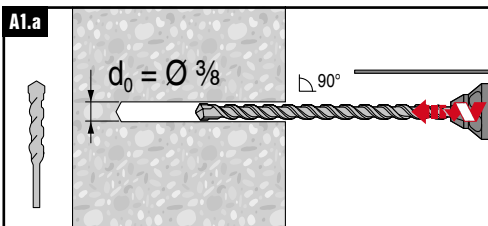
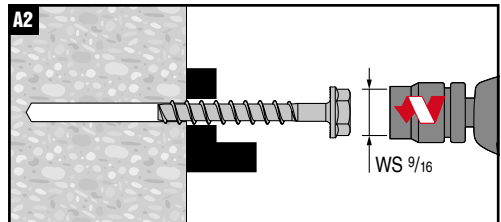
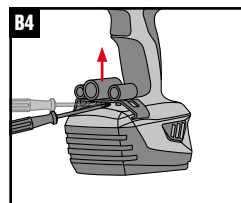
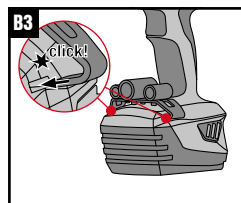
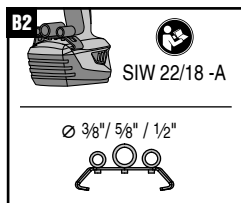
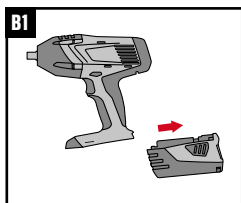
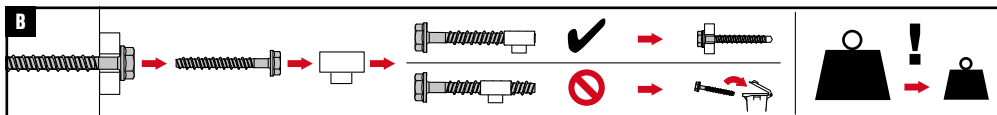


	$\frac{3}{8} \times 2\frac{1}{8}$		$\frac{3}{8} \times 3..5$	
SID 4 22/18-A	✓	✓	✗	✗
SIW 22/18-A	✗	✗	✓	✓
	40 ft·lb			

KWIK HUS	$h_1^*$	$t_{\text{fix}}$
$\frac{3}{8} \times 2\frac{1}{8}$	$2\frac{3}{8} - t_{\text{fix}}$	0... $\frac{1}{2}$
$\frac{3}{8} \times 3$	$3\frac{1}{4} - t_{\text{fix}}$	0... $\frac{1}{2}$
$\frac{3}{8} \times 3\frac{1}{2}$	$3\frac{3}{4} - t_{\text{fix}}$	0...1
$\frac{3}{8} \times 4$	$4\frac{1}{4} - t_{\text{fix}}$	0... $\frac{3}{4}$
$\frac{3}{8} \times 5$	$5\frac{1}{4} - t_{\text{fix}}$	0... $1\frac{3}{4}$



\*For non-hole cleaning installation (steps A1.a or A1.b), make sure to drill deep enough to achieve  $h_1$ , taking into account the depth of debris remaining in the hole



<b>&lt; 3000 psi</b>	$3/8 \times 2 1/8$	$3/8 \times 3...5$
✓	✗	✗
✗	✓	✓
	40 ft-lb	

<b>≥ 3000 psi</b>	$3/8 \times 2 1/8$	$3/8 \times 3...5$
✓	✗	✗
✗	✗	✓
	40 ft-lb	

