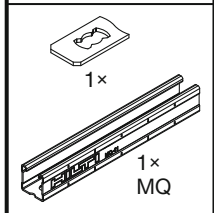
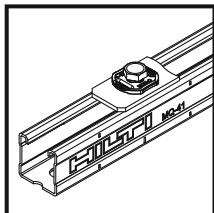


MQN-CP

Montage / Assembly / Montage:



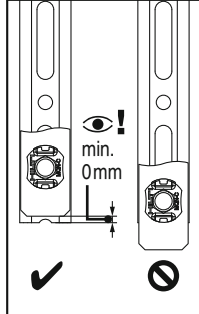
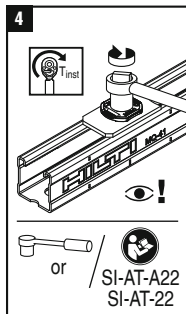
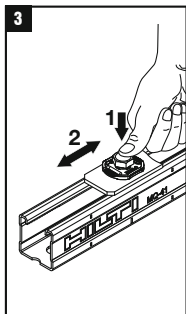
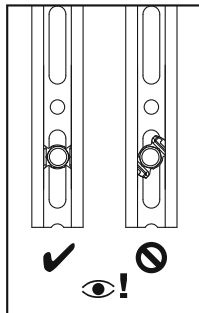
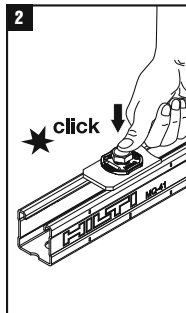
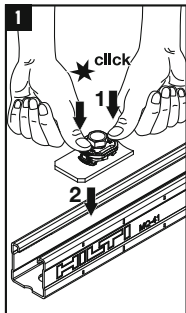
Channel I*

25 Nm
(18 ft-lb)

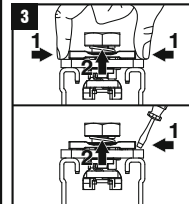
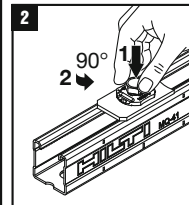
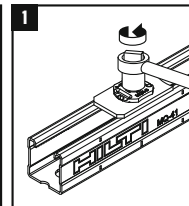


Channel II*

40 Nm
(30 ft-lb)



Demontage / Disassembly /
Démontage:



*Channel I: MQ-21.5 / MQ-41-L / MQ-41D-L Channel II: andere MQ Schienen / other MQ Channels / autres rails MQ

2190669-12.2022